

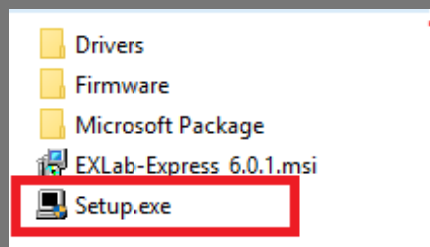
EXLab – Express Setup

Quick Start Guide

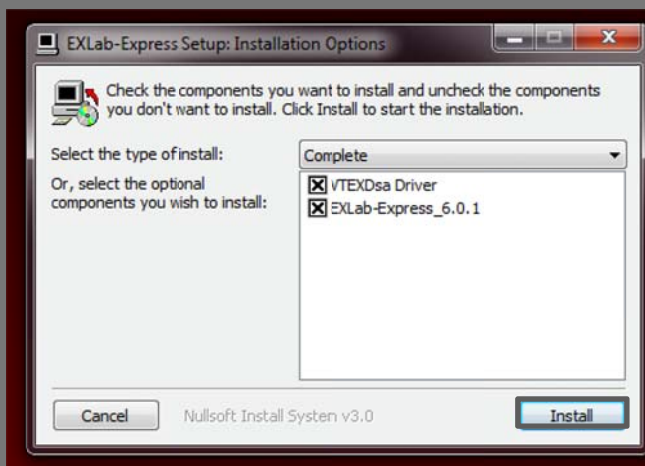
Follow this guide to learn how to install EXLab Express and its necessary components, and how to connect to your device and take an acquisition.

Auto Installation

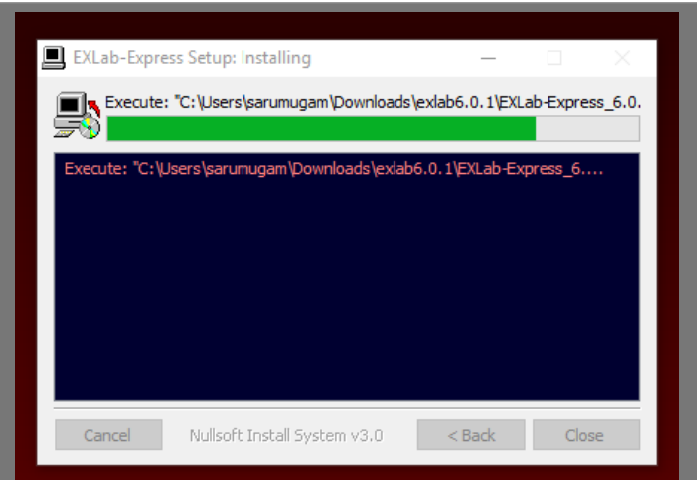
1. Double Click **Setup.exe** > file available in the zip archive of the installation package.



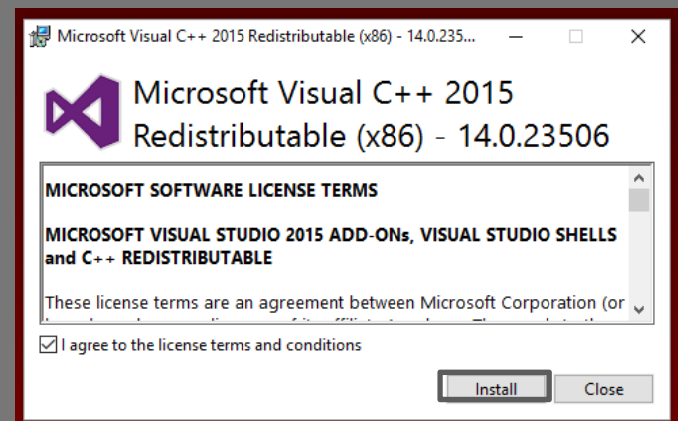
2. Choose type of install. The **Complete** option allows user to install all the software components automatically in the PC. Note: Unchecking any components will automatically change installation option to **Custom** mode.



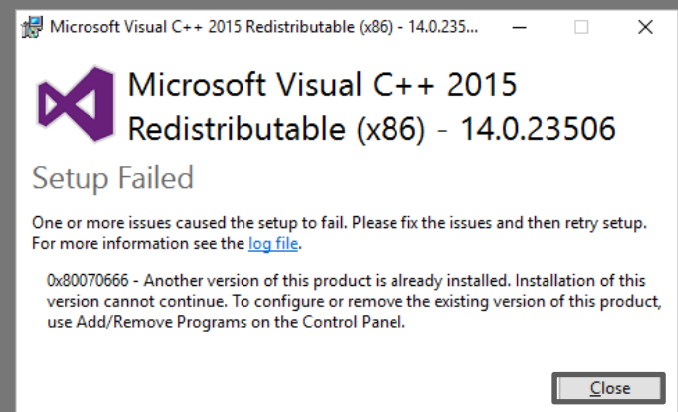
5. The setup progresses and starts the installation of EXLab express components



3. The redistributable installed first based on OS.



4. Ignore, if the redistributable is already installed popup appears and click **close**>

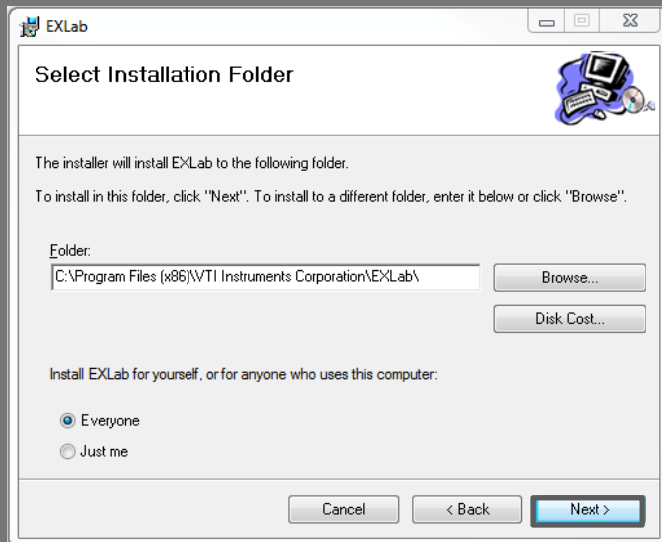


EXLab Installation

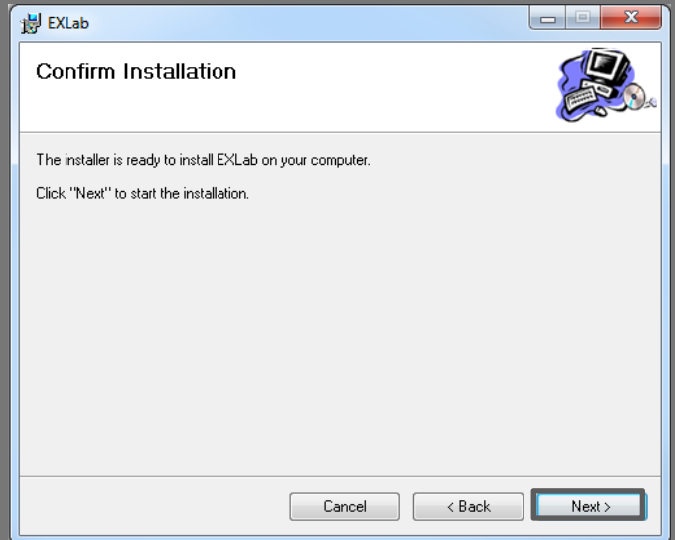
1. After installation of redistributable components. The Welcome screen of EXLab appears as follows. Click **Next >**.



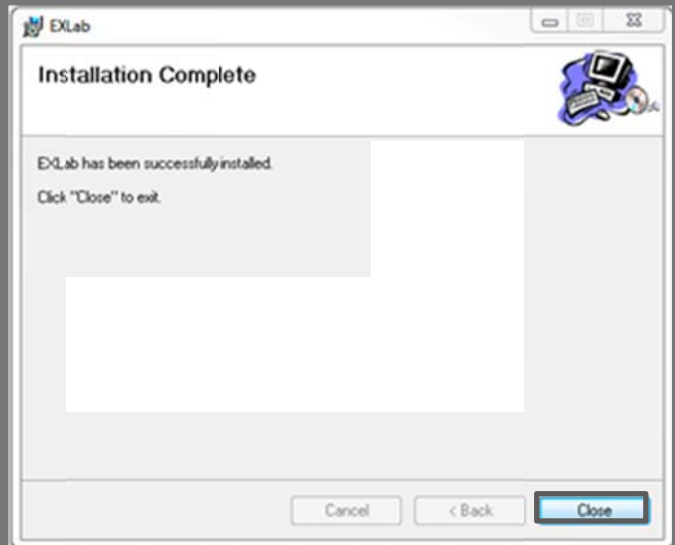
2. Click **Next >**.



3. Click **Next >**.



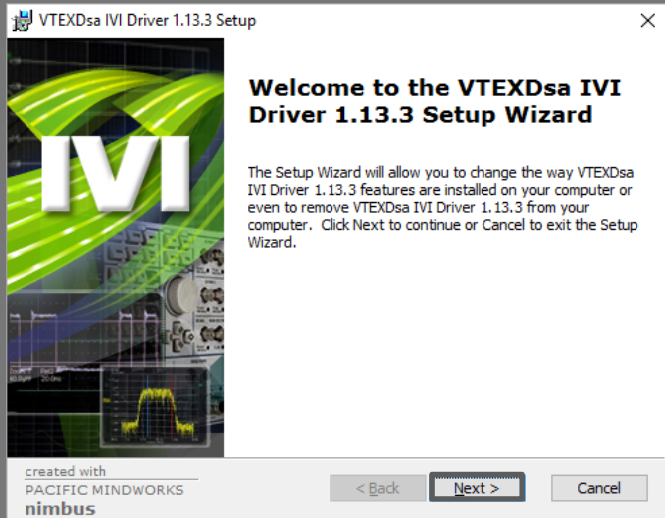
4. Click **Close**.



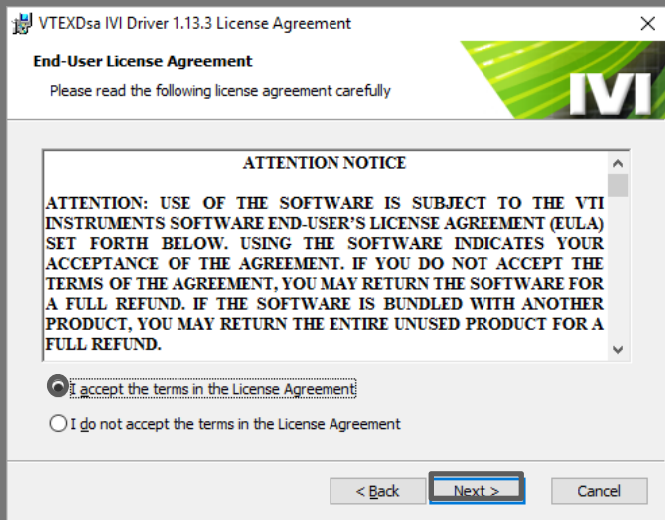
EXLab is now installed.

VTEX Drivers Installation

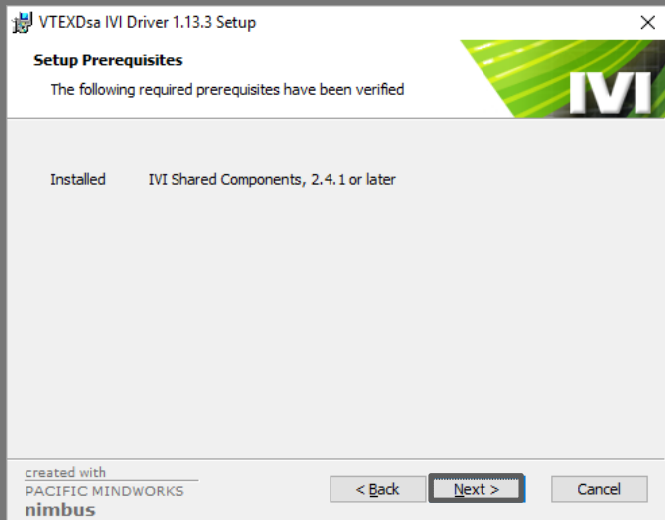
1. Click **Next >** in the driver Setup screen to install the VTEXDsa drivers.



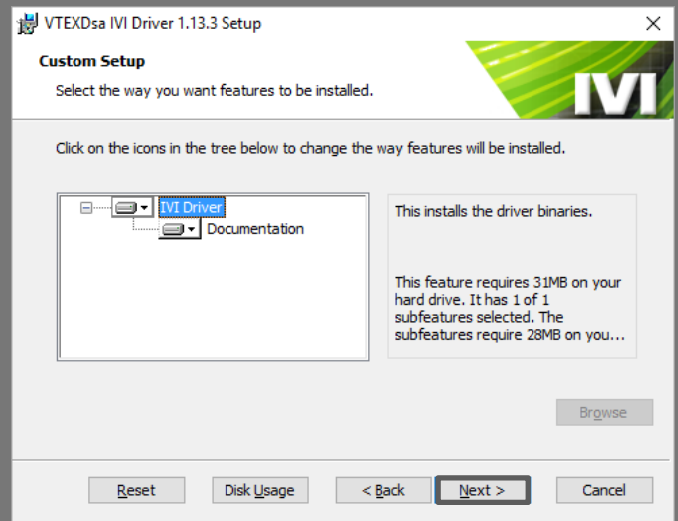
2. Click the bullet next to I accept the terms in the License Agreement. Then, click Next >.



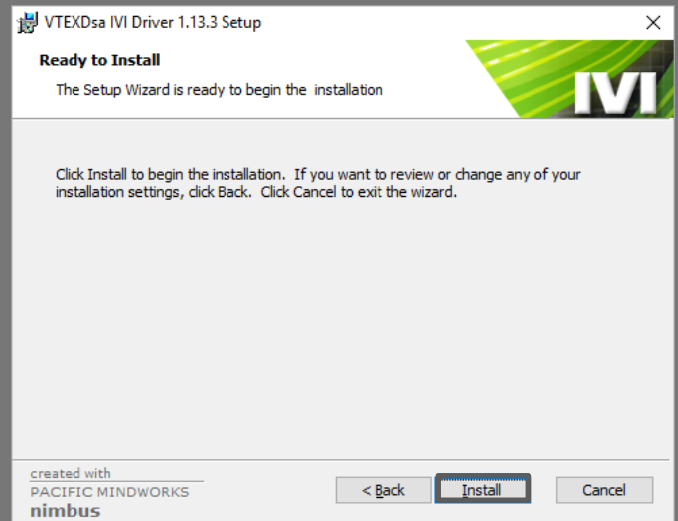
3. Click Next >.



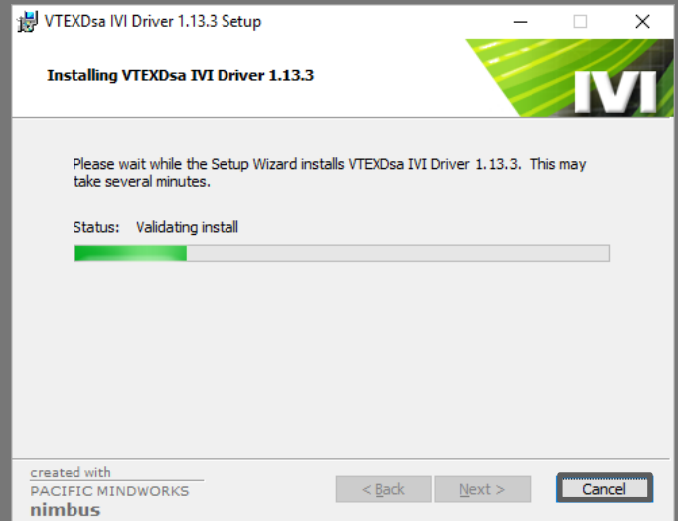
5. Click Next >.



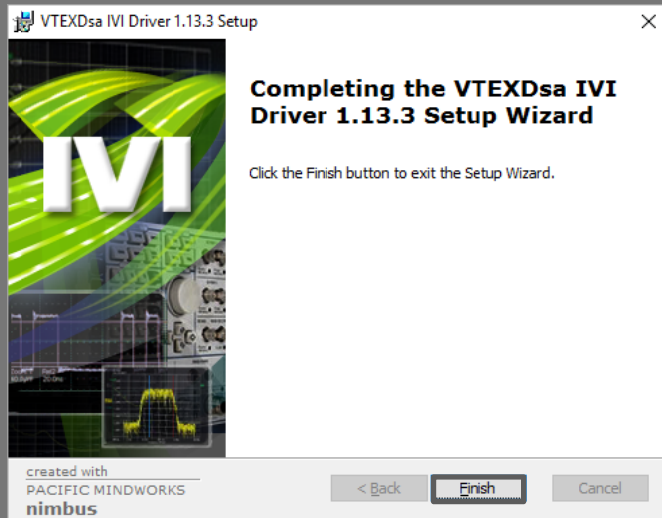
6. Click Install.



7. The installation progress bar screen appears



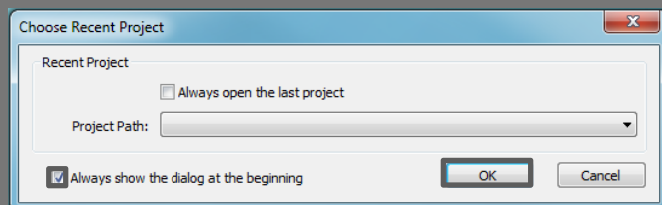
8. Click **Finish**.



The VTEX DSA driver is now installed.

Connect Device to EXLab

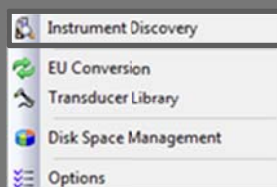
1. Open EXLab.
2. Click **OK**. This might open a previously saved project if it is available in the project path or click **Cancel** if you do not wish to open any previous projects



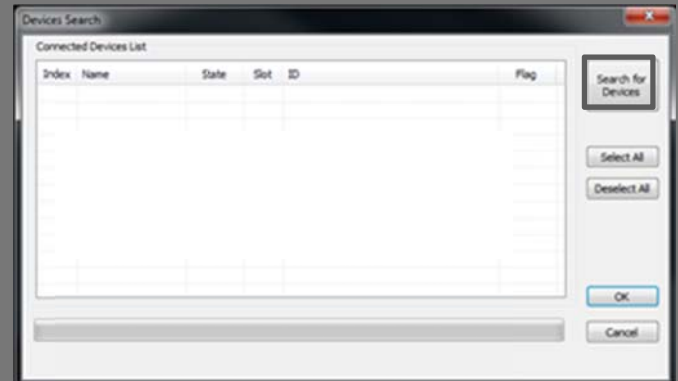
3. Click **Tools** on the top menu.



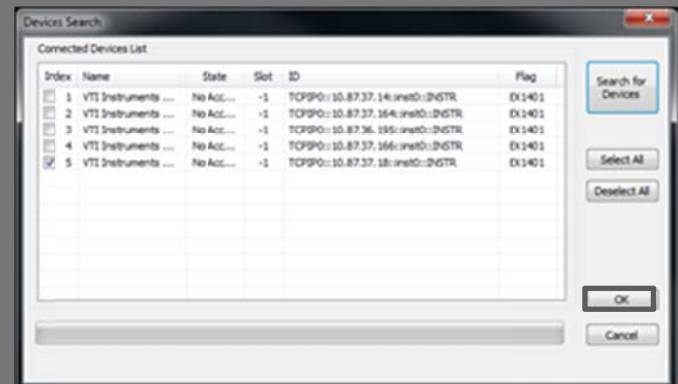
4. Click **Instrument Discovery**.



5. Make sure your device is powered on and connected to the network. Then, click **Search for Devices**.



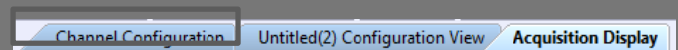
6. Make sure the only box that is checked is for the device you want to connect to. Then, click **OK**.



Your device is now connected to EXLab.

Set Up Channels

1. Click the **Channel Configuration** tab.



2. In the Channel columns, **Enable** the box for the channel(s) you want to measure.
3. Select the correct function under **Function** column.

- For temperature measurements, select the correct thermocouple type under the **Transducer** column.
- Select the correct range under the **Range** column. It is applicable for Voltage only and not thermocouple measurements.

Index	ID	Enable	Function	Transducer	Range
0	CH01	<input checked="" type="checkbox"/>	Temperature	Thermocouple K	0.10 V
1	CH02	<input type="checkbox"/>	Temperature	Thermocouple K	0.10 V
2	CH03	<input type="checkbox"/>	Temperature	Thermocouple K	0.10 V

The channels you will be taking measurements with are now set up.

Set Up acquisition

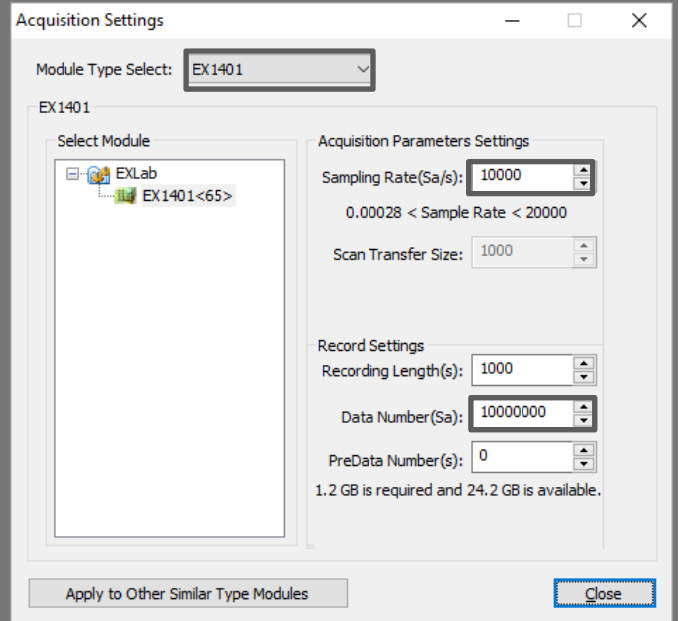
- Click **Settings** on the top menu.



- Click **Acquisition**.



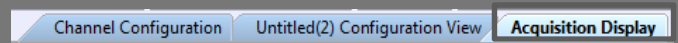
- Make sure the unit you want to take measurements with is selected in the box next to **Module Type Select**.
- Set the sample rate in the box next to **Sampling Rate (Sa/s)**.
- Set the number of data samples in the box next to **Data Number (Sa)**.
- Click **Close**.



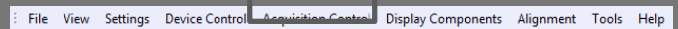
The acquisition is now set up.

Run acquisition

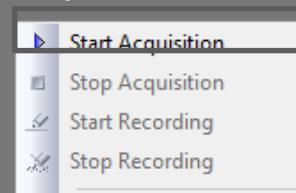
- Click the **Acquisition Display** tab.



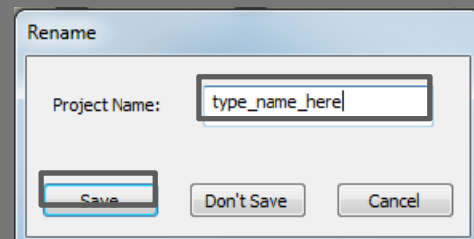
- Click **Acquisition Control** on the top menu.



- Click **Start Acquisition**.



- Type in a name for your project in the box next to **Project Name**.
- Click **Save**.



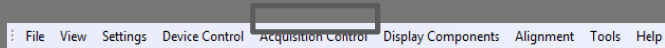
- Type in a name for your test in the box next to **Test Name:**.
- Click **OK**.



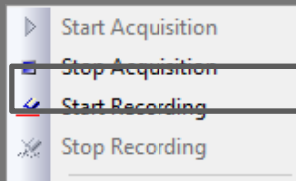
The acquisition is now running.

Record data

- Click **Acquisition Control** on the top menu.



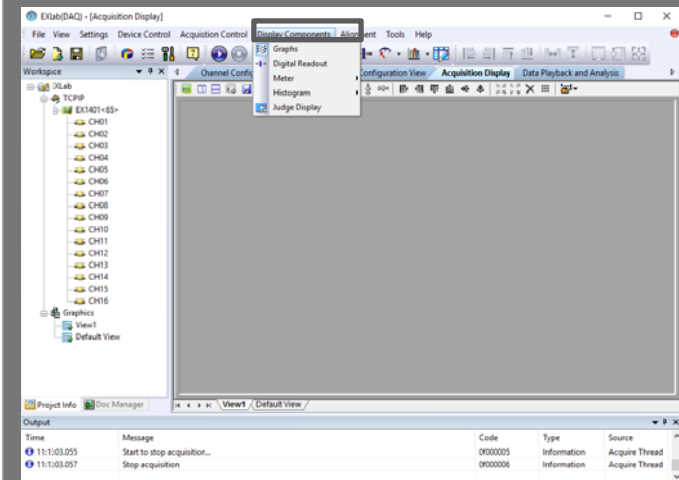
- Click **Start Recording**. This will take and save the acquisition you set up in the **Set Up Acquisition** section.



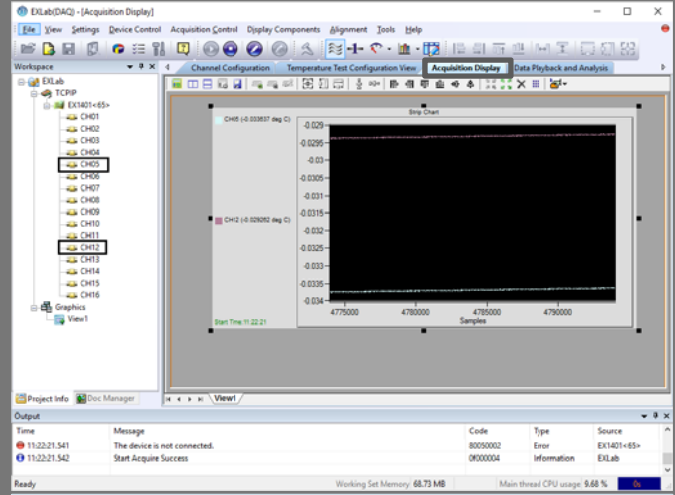
The data from the acquisition is now recorded.

MONITOR data

- Click **Display Components** on the top menu and then select the **Graphs** in the top list.

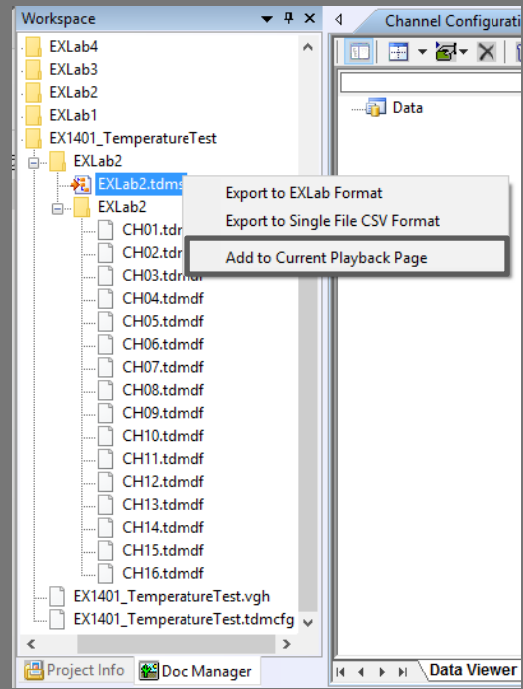


- Draw the required graph display size in the **Acquisition Display** window and then drag & drop the required channels in the workspace section on that control. The real-time data for the respective chosen channels is now displayed in the control. The below picture shows channels 5 & 12 temperature data plots

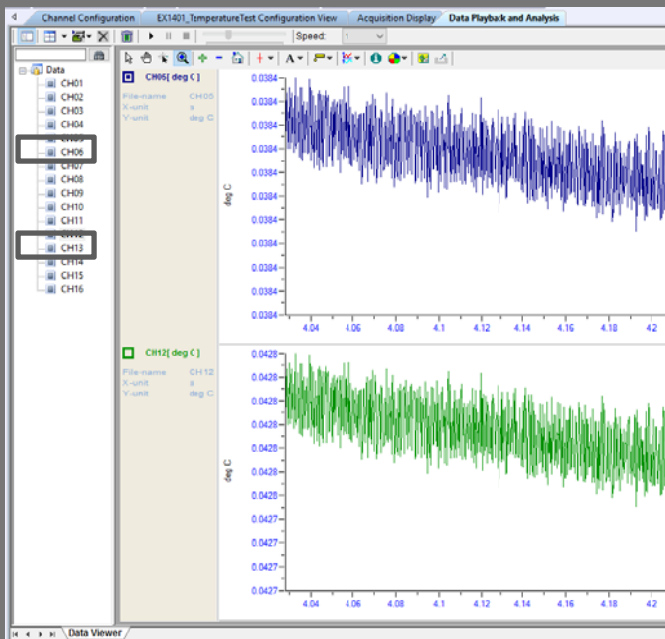


Export data

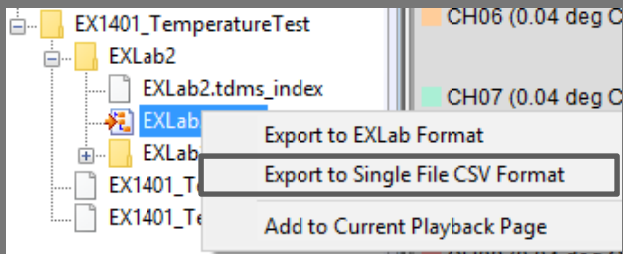
- In the workplace section, right click on any binary data (*.tdms) you like to export and click **Add to Current Playback Page**.



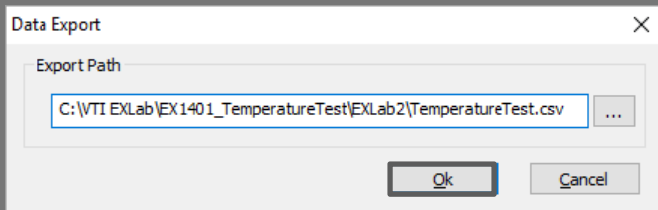
- The data is now displayed and can be reviewed on the **Data Playback and Analysis** page. The user can adjust the view, and perform the scroll or play back operation on the selected channels plotted data.



- To export the data into a CSV file, simply right click on the binary data file and click **Export to Single File CSV Format**.



- In the following popup window, simply type in or choose the destination folder and click **OK**.



Note: For any technical support, please contact vti_support@ametek.com.

